



Chartered Surveyors & Letting Agents



## 19, Main Road, Glaston, LE15 9BP

### £995 PCM

Charming Grade II listed semi-detached stone cottage with a private courtyard garden and useful outbuilding situated in a picturesque village only 2 miles away from the historic market town of Uppingham and its amenities.

The cottage offers has been sympathetically maintained and offers modern-day conveniences alongside wealth of character features.

The accommodation benefits from gas-fired central heating system and briefly comprises:

GROUND FLOOR: Entrance Area, Sitting Room with log-burning stove, Dining Room with feature fireplace, refitted shaker-style Kitchen, Utility Area; FIRST FLOOR: three Bedrooms, Bathroom with freestanding claw-foot bath.

On-street parking.

Council Tax Band: C (Rutland)  
Deposit: £1148.07

**Oakham**  
5 Market Street  
Oakham  
Rutland LE15 6DY  
Tel: 01572 755555  
Letting Centre: 01572 755513  
[oakham@murray.co.uk](mailto:oakham@murray.co.uk)

**Stamford**  
Sales Enquiries  
01780 766604  
Lettings Enquiries  
01572 755513

[stamford@murray.co.uk](mailto:stamford@murray.co.uk)

**Uppingham**  
18 High Street East  
Uppingham  
Rutland LE15 9PZ  
Tel: 01572 822587  
Letting Centre: 01572 822587  
[uppingham@murray.co.uk](mailto:uppingham@murray.co.uk)

Sales • Lettings • Country Homes • Commercial • Surveys • Agricultural Management • Planning & Development

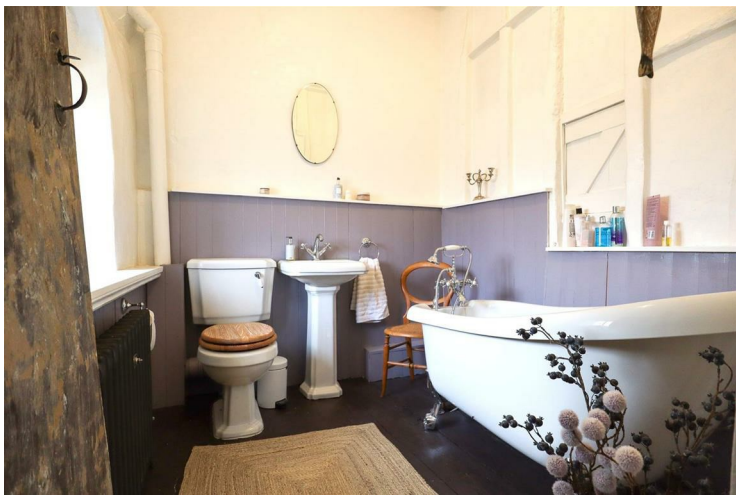
















SERVICE

- Mains electricity
- Mains water supply
- Mains sewerage
- Gas central heating

According to <https://checker.ofcom.org.uk/>  
Broadband availability: Standard, Superfast  
Mobile signal availability:  
Indoor: O2 - voice likely, data limited; Vodafone - voice and data limited; EE - voice limited, data - none; Three - none;  
Outdoor: O2, Vodafone, EE, Three - voice and data likely.  
Results are predictions and not a guarantee.

None of the services, fittings, or appliances (if any) heating installations, plumbing or electrical systems, telephone or television points have been tested by the Selling Agents.

